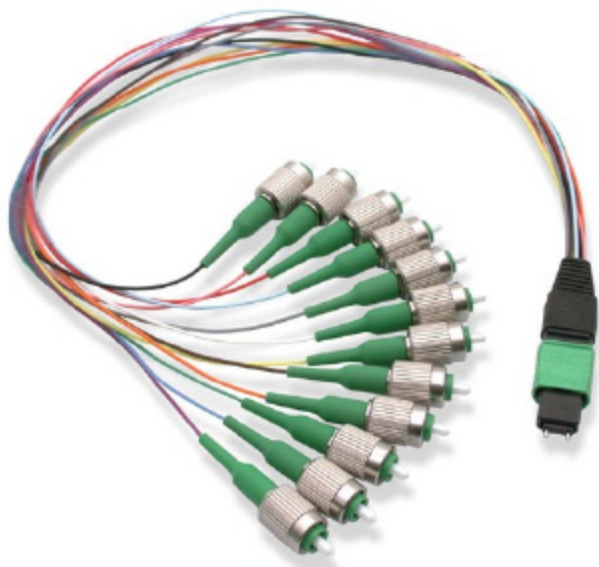


# TEST CABLE ASSEMBLIES

---



Stratos Lightwave Test Cable assemblies are manufactured with the highest possible concentricity and tightest tolerance components to ensure accurate and reliable test measurements. Stringent standards and factory test procedures provide reliability and durability. Available in singlemode, multimode and multi-fiber versions, Stratos' Test Cable assemblies can be ordered in a variety of standard and custom configurations adapting to any type of test configuration. High precision interferometric measuring equipment is used to guarantee; apex offset, fiber protrusion and concentricity of the ferrule end face ensuring that all Test Cable Assemblies are capable of meeting the stringent demands for low insertion loss and low back reflectance in network systems.

---

## Benefits

- Lowest cost possible for a true Test Cable
- Most durable Test Cables
- Ceramic ferrules withstand hundreds of tests
- Reduced test variability
- Reduced Alpha and Beta Risk
- Lower repair and installation costs

## Features

- Singlemode and Multimode (50/125, 62.5/125)
  - Standard and custom configurations possible
  - Test Cables pass heightened EFG test
  - Single mode Test Cables have a flawless end face at 200X and 400X magnification
  - Multimode Test Cables have a flawless end face at 200X and 800X magnification
  - Performance exceeds Telcordia GR 326 and 1435
  - Fiber is centered to theoretical center for the lowest four quadrant insertion loss readings possible
- 

## Applications

- Telecom test sets
- Device testing
- MIL testing

## Materials

- **Body:** Thermoplastic
  - **Boot:** Thermoplastic
  - **Crimp Sleeve:** Copper, Tin-Plated
  - **Ferrule:** Thermoset and Ceramic
  - **Fiber:** 9/125, 50/125, and 62.5/125
- 

## Performance

	Multimode	Singlemode
• Nominal Fiber OD .....	125µm .....	125µm .....
• Insertion Loss (typical) .....	<0.1dB .....	0.2dB .....
• Return Loss (min).....	-20dB .....	-50dB .....
• Mating Durability (500cycles).....	<0.2dB.....	<0.2dB .....
• Temperature Stability (-40°C to +85°C) .....	<0.3dB.....	<0.3dB .....
• Ferrule Material .....	Ceramic.....	Ceramic .....

---

STRATOS

Form F56-0312